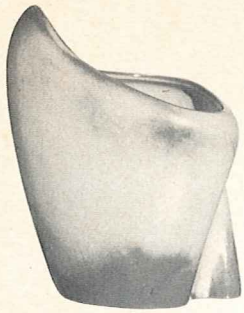


Appropriate Containers For Beautiful Flower Arrangements



6-7" FREE FORM VASE—2.50



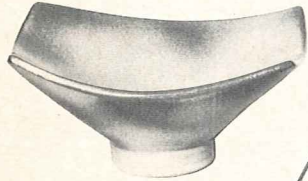
35-6" FOOTED BOWL—1.50



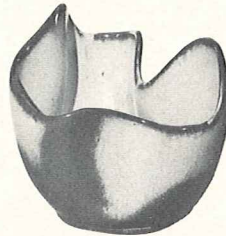
190-6" WALL VASE—1.25



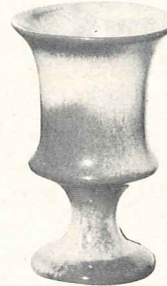
23A-6" SQ. PEDESTAL VASE—3.00



F34-8" RICE BOWL—2.00



F29-6" DRAPERY VASE—2.00



F35-7" PEDESTALLED VASE—2.00



57S-6" CORNUCOPIA—1.50



59-6 1/2" CANTEEN—2.50



F33-7" FLUTED PLANTER—2.00



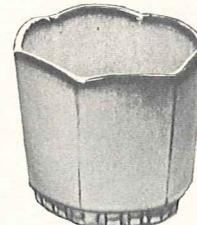
F52-7" PEDESTALLED URN—3.00



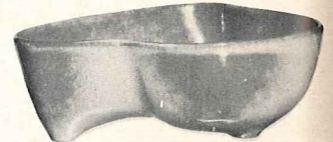
OLD FASHIONED PITCHER SET
F30A-5 1/2" PITCHER—2.50
F30B-7" BOWL—1.50



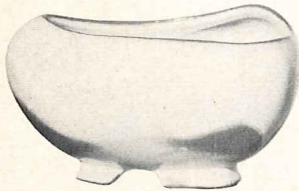
40A—SMALL PITCHER—2.00
40B—BOWL—1.25



37-4" HEXAGONAL PLANTER—1.25



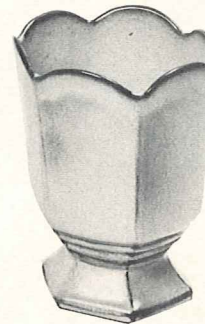
4N-8" BOWL—1.50



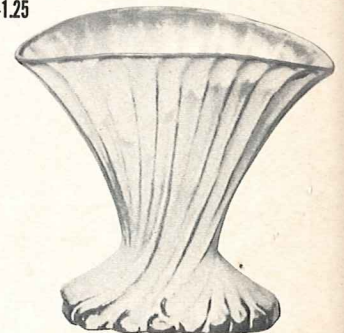
234-FOOTED FREE FORM BOWL—2.00



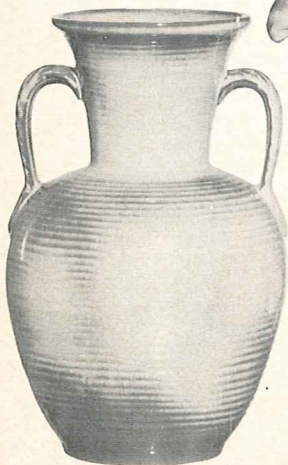
222-12" CORNUCOPIA—3.50



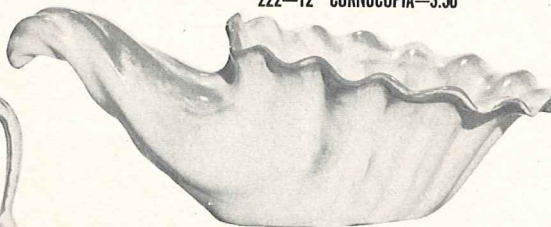
65-8" HEXAGONAL VASE—2.00



19-7" FAN VASE—2.50



71-10" LEAF HANDLED VASE—3.50



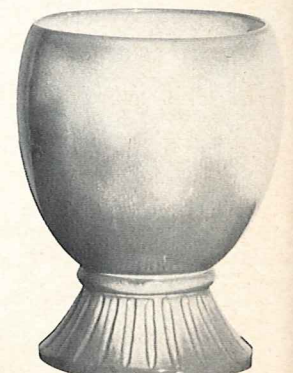
215-15" CORNUCOPIA—10.00



22S-5" FOOTED ROUND VASE—1.25



22-7" FOOTED ROUND VASE—2.00



52-8" URN—3.50